



Mary Rose Close, Grays, RM16

BUTLER  STAG





**An impressive and beautifully proportioned family residence extending to approximately 1,650 Sq. ft, further enhanced by a detached garage and a versatile outbuilding, offering exceptional space and flexibility for modern living.**



## Freehold

- Stunning Extended Detached Family Home
- Four Bedrooms/Two Bathrooms
- Striking Kitchen/Breakfast Room With AEG/Bosch Appliances
- Finished To Exacting Standards
- Formal Lounge With Bespoke Media Wall
- Off-Street Parking For Several Vehicles & Detached Garage

The home is approached via a welcoming entrance hall that immediately sets the tone, providing access to a discreet ground-floor cloakroom and an elegant staircase rising to the first floor. The principal reception room is generously scaled, offering a refined yet comfortable setting for relaxation, with wide proportions that allow for sophisticated furnishing.

To the rear, an expansive dining room extension creates a superb environment for entertaining, seamlessly connecting indoor and outdoor living through double doors opening onto the garden. The kitchen/breakfast room is thoughtfully designed, fitted with a range of Bosh & AEG appliances, combining functionality with style and providing ample space for both everyday living and informal dining.

The first floor is arranged around a central landing and offers four well-appointed bedrooms. The principal bedroom enjoys the luxury of a private en-suite shower room, while the remaining bedrooms are served by a beautifully proportioned family bathroom. Integrated storage throughout the floor enhances both convenience and elegance.

Outside, the property continues to impress with a detached garage and off-street parking for several vehicles. To the rear, a low maintenance garden also holds a substantial outbuilding fitted with heating & internet connection, presenting an ideal opportunity for a home office, gym, studio, or ancillary accommodation, subject to individual requirements.

This exceptional home effortlessly combines generous accommodation, refined proportions, and versatile ancillary space, making it an ideal choice for discerning buyers seeking both luxury and practicality in a family setting.





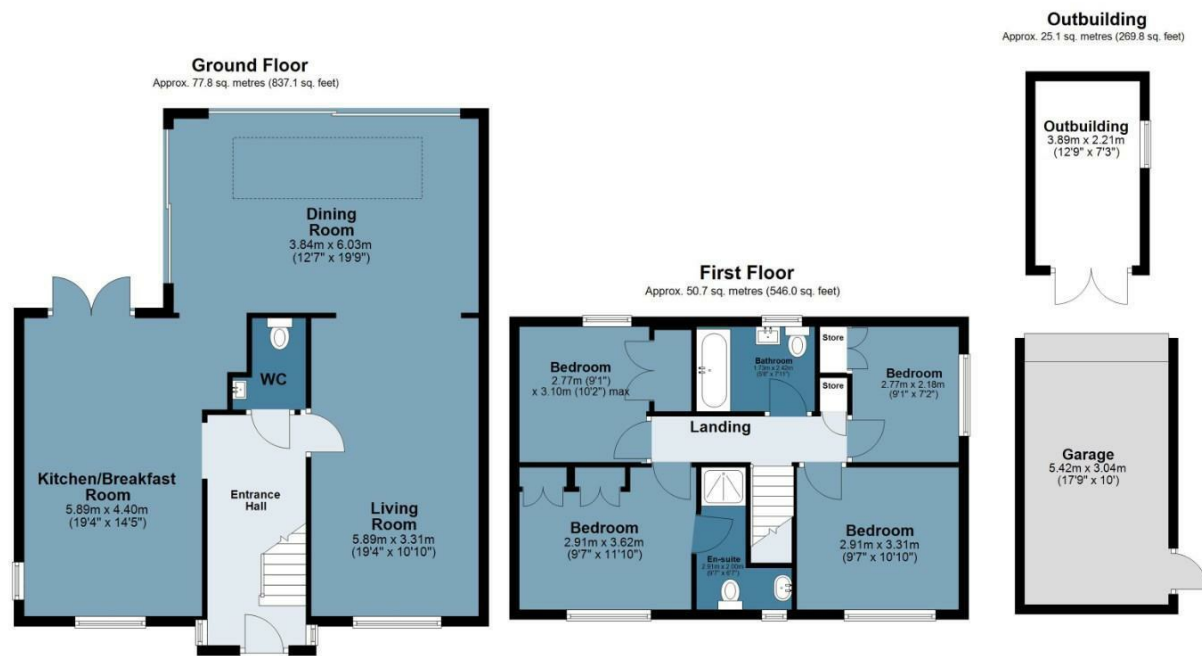




## Mary Rose Close

Approx. Gross Internal Area 153.6 Sq M ( 1652.9 Sq Ft )

BUTLER & STAG



Measurements are approximate and for illustration purposes only. While we do not doubt the accuracy and completeness, we advise you conduct a careful independent assessment of the property to determine monetary value.  
© @modephoto.uk www.modephoto.co.uk

IMPORTANT NOTICE - These particulars have been prepared in good faith and they are not intended to constitute part of an offer or contract. We have not performed a structural survey on this property and the services, appliances and specific fittings have not been tested. All photographs, measurements, floor plans and distances referred to are given as a guide and should not be relied upon.

BUTLER & STAG

☎ 01992 667666

🏠 4 Forest Drive, Theydon Bois, Essex, CM16 7EY

✉ theydon@butlerandstag.com

[www.butlerandstag.uk](http://www.butlerandstag.uk)